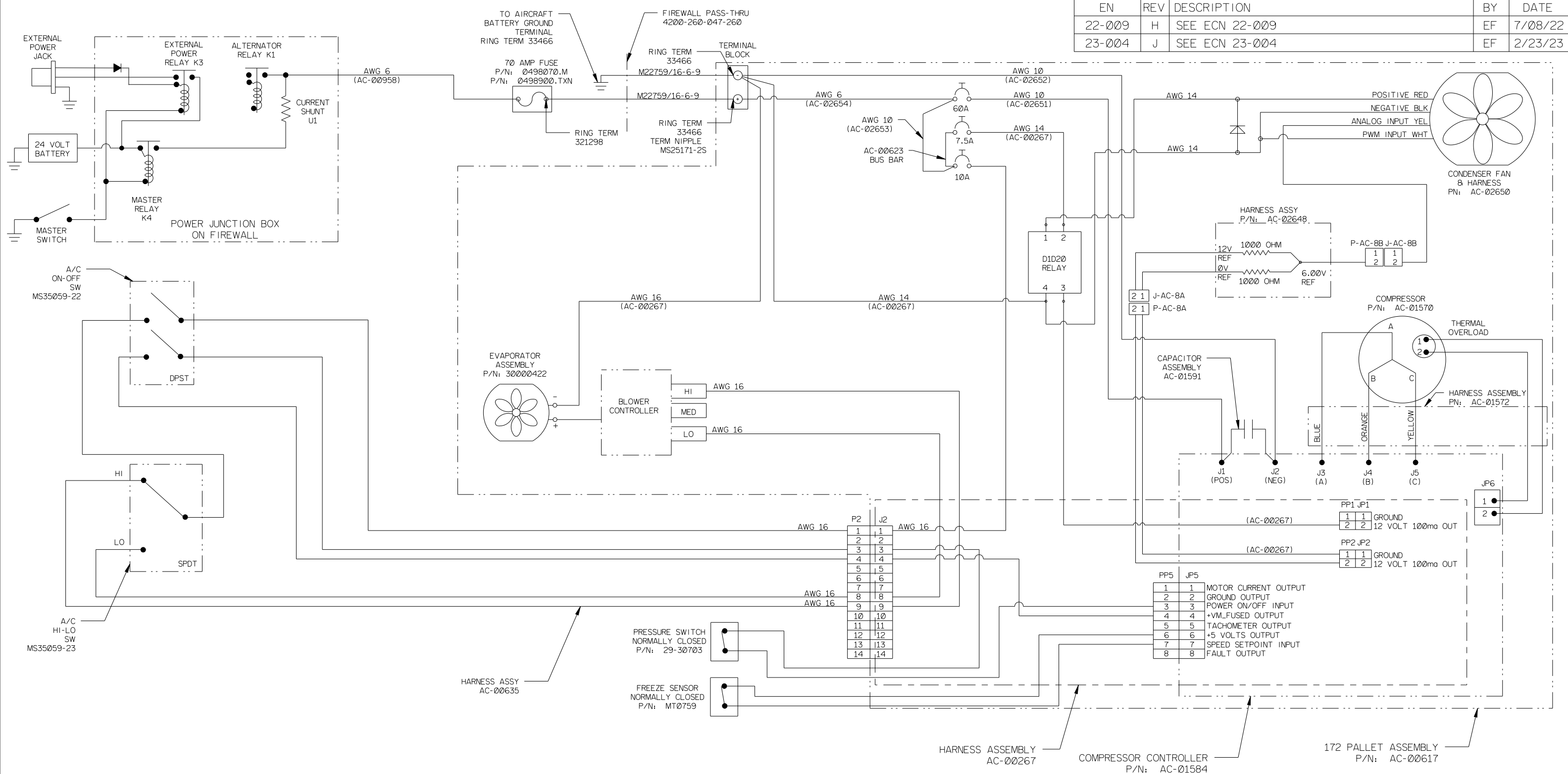


EN	REV	DESCRIPTION	BY	DATE
22-009	H	SEE ECN 22-009	EF	7/08/22
23-004	J	SEE ECN 23-004	EF	2/23/23



- NOTES:
- 1 WIRE GAGES SHOWN ABOVE ARE MINIMUM WIRE SIZES.
  - 2 WIRES TO BE AWG 22 MINIMUM UNLESS NOTED OTHERWISE.

UNLESS OTHERWISE SPECIFIED DIMENSIONS ARE IN INCHES AND APPLY AFTER HEAT TREAT AND PLATING .X = ±.015 .XX = ±.010 .XXX = ±.005 BREAK ALL EDGES AND MACHINE ALL INSIDE CORNER FILLETS .015 MAX. SURFACE FINISH 125	GEOMETRIC SYMBOLS PER ANSI Y14.5 □ FLATNESS — STRAIGHTNESS ○ ROUNDNESS ⊙ CYLINDRICITY △ PROFILE ⊥ PERPENDICULARITY ⊕ POSITION ◎ CONCENTRICITY ≡ SYMMETRY ∠ ANGULARITY // PARALLELISM ↻ CIRCULAR RUNOUT ⊕ TOTAL RUNOUT	DRAWN	JD	5/16/12	<b>KELLY AEROSPACE</b> Thermal Systems 1625 Lost Nation Rd. Willoughby, OH 44094
		CHECKED	JB	5/16/12	
THIS DRAWING CONTAINS INFORMATION THAT IS CONFIDENTIAL AND PROPRIETARY TO KELLY AEROSPACE. THIS DRAWING IS FURNISHED ON THE UNDERSTANDING THAT THE DRAWING AND THE INFORMATION IT CONTAINS WILL NOT BE COPIED OR DISCLOSED TO OTHERS EXCEPT WITH THE WRITTEN CONSENT OF KELLY AEROSPACE. WILL NOT BE USED TO THE DETRIMENT OF KELLY AEROSPACE, AND WILL BE RETURNED UPON REQUEST BY KELLY AEROSPACE.	SCALE: NONE	FINISH	-		172 AC SCHEMATIC WITH TOGGLE SWITCH CONTROL
		WEIGHT	-		
		MATERIAL			DRAWING NO.
		SIZE	B	SH 1 OF 1	CODE ID
					7FUQ0
					DRAWING NO.
					AC-00633
					REV.
					J