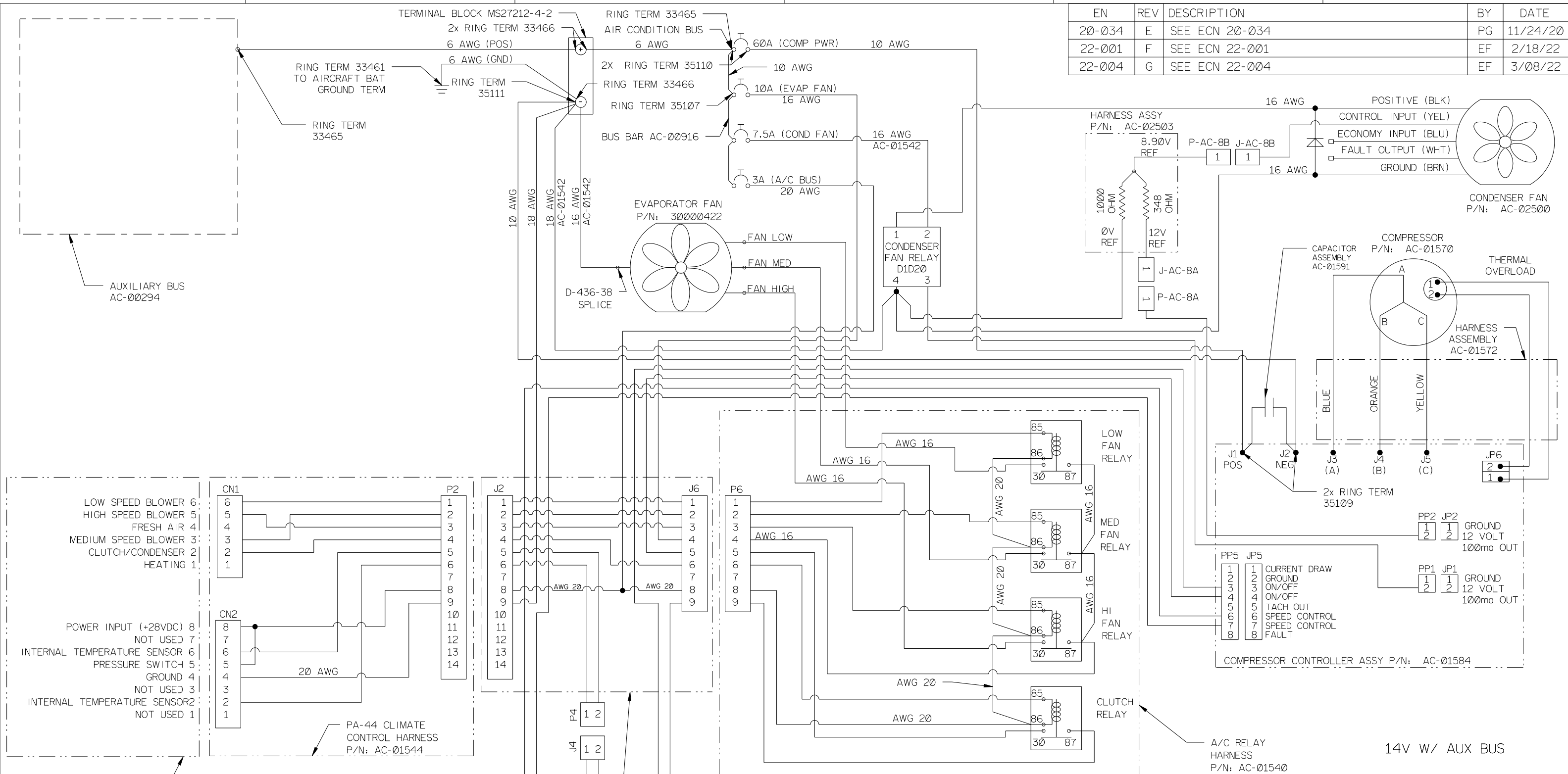


| EN     | REV | DESCRIPTION    | BY | DATE     |
|--------|-----|----------------|----|----------|
| 20-034 | E   | SEE ECN 20-034 | PG | 11/24/20 |
| 22-001 | F   | SEE ECN 22-001 | EF | 2/18/22  |
| 22-004 | G   | SEE ECN 22-004 | EF | 3/08/22  |



|                             |   |
|-----------------------------|---|
| LOW SPEED BLOWER            | 6 |
| HIGH SPEED BLOWER           | 5 |
| FRESH AIR                   | 4 |
| MEDIUM SPEED BLOWER         | 3 |
| CLUTCH/CONDENSER HEATING    | 2 |
| HEATING                     | 1 |
| POWER INPUT (+28VDC)        | 8 |
| NOT USED                    | 7 |
| INTERNAL TEMPERATURE SENSOR | 6 |
| PRESSURE SWITCH             | 5 |
| GROUND                      | 4 |
| NOT USED                    | 3 |
| INTERNAL TEMPERATURE SENSOR | 2 |
| NOT USED                    | 1 |

UNLESS OTHERWISE SPECIFIED

DIMENSIONS ARE IN INCHES AND APPLY AFTER HEAT TREAT AND PLATING

.X = ±.015  
.XX = ±.010  
.XXX = ±.005

ANGLES ±1°

BREAK ALL EDGES AND MACHINE ALL INSIDE CORNER FILLETS .015 MAX. SURFACE FINISH 125

THIS DRAWING CONTAINS INFORMATION THAT IS CONFIDENTIAL AND PROPRIETARY TO KELLY AEROSPACE. THIS DRAWING IS FURNISHED ON THE UNDERSTANDING THAT THE DRAWING AND THE INFORMATION IT CONTAINS WILL NOT BE COPIED OR DISCLOSED TO OTHERS EXCEPT WITH THE WRITTEN CONSENT OF KELLY AEROSPACE. WILL NOT BE USED TO THE DETRIMENT OF KELLY AEROSPACE, AND WILL BE RETURNED UPON REQUEST BY KELLY AEROSPACE.

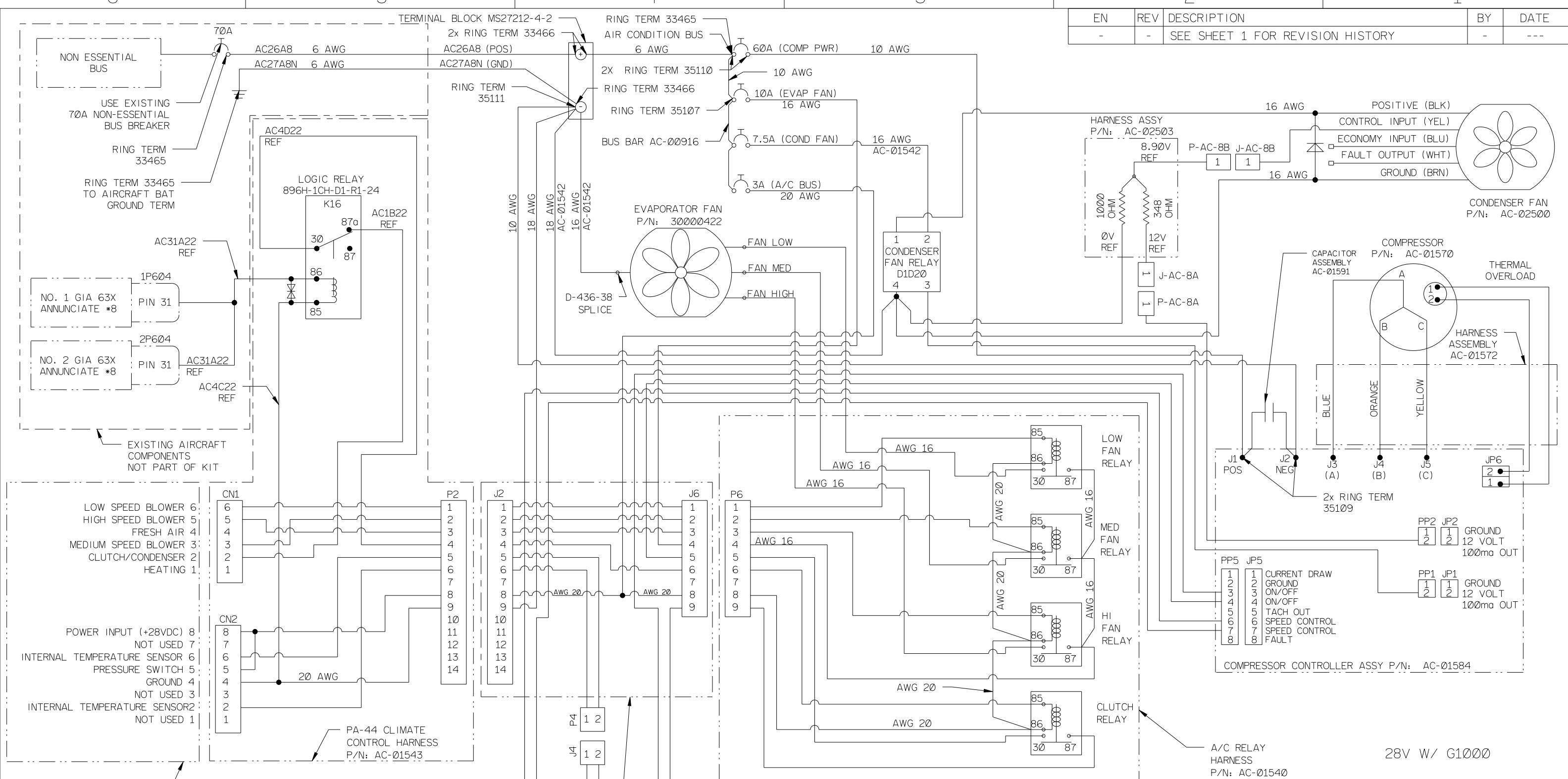
| GEOMETRIC SYMBOLS PER ANSI Y14.5 | DRAWN | CHECKED | ENG. | FINISH | WEIGHT | MATERIAL | SIZE | SH | OF | CODE ID | DRAWING NO. | REV. |
|----------------------------------|-------|---------|------|--------|--------|----------|------|----|----|---------|-------------|------|
| □ FLATNESS                       | EF    | PG      | JB   | -      | -      | -        | B    | 1  | 2  | 7FUQ0   | AC-01537    | G    |
| — STRAIGHTNESS                   |       |         |      |        |        |          |      |    |    |         |             |      |
| ○ ROUNDNESS                      |       |         |      |        |        |          |      |    |    |         |             |      |
| ⊘ CYLINDRICITY                   |       |         |      |        |        |          |      |    |    |         |             |      |
| △ PROFILE                        |       |         |      |        |        |          |      |    |    |         |             |      |
| ⊥ PERPENDICULARITY               |       |         |      |        |        |          |      |    |    |         |             |      |
| ⊕ POSITION                       |       |         |      |        |        |          |      |    |    |         |             |      |
| ◎ CONCENTRICITY                  |       |         |      |        |        |          |      |    |    |         |             |      |
| ≡ SYMMETRY                       |       |         |      |        |        |          |      |    |    |         |             |      |
| ∠ ANGULARITY                     |       |         |      |        |        |          |      |    |    |         |             |      |
| ∥ PARALLELISM                    |       |         |      |        |        |          |      |    |    |         |             |      |
| ↺ CIRCULAR RUNOUT                |       |         |      |        |        |          |      |    |    |         |             |      |
| ↻ TOTAL RUNOUT                   |       |         |      |        |        |          |      |    |    |         |             |      |
| SCALE: NTS                       |       |         |      |        |        |          |      |    |    |         |             |      |

**KELLY AEROSPACE**  
Thermal Systems  
1625 Lost Nation Rd.  
Willoughby, OH 44094

PA-44 PIPER SEMINOLE AIR CONDITIONING SCHEMATIC, CB-2

DRAWING NO. AC-01537

| EN | REV | DESCRIPTION                      | BY | DATE |
|----|-----|----------------------------------|----|------|
| -  | -   | SEE SHEET 1 FOR REVISION HISTORY | -  | ---  |



UNLESS OTHERWISE SPECIFIED

DIMENSIONS ARE IN INCHES AND APPLY AFTER HEAT TREAT AND PLATING  
.X = ±.015  
.XX = ±.010  
.XXX = ±.005  
ANGLES ±1°  
BREAK ALL EDGES AND MACHINE ALL INSIDE CORNER FILLETS .015 MAX.  
SURFACE FINISH 125

THIS DRAWING CONTAINS INFORMATION THAT IS CONFIDENTIAL AND PROPRIETARY TO KELLY AEROSPACE. THIS DRAWING IS FURNISHED ON THE UNDERSTANDING THAT THE DRAWING AND THE INFORMATION IT CONTAINS WILL NOT BE COPIED OR DISCLOSED TO OTHERS EXCEPT WITH THE WRITTEN CONSENT OF KELLY AEROSPACE. WILL NOT BE USED TO THE DETRIMENT OF KELLY AEROSPACE, AND WILL BE RETURNED UPON REQUEST BY KELLY AEROSPACE.

| GEOMETRIC SYMBOLS PER ANSI Y14.5 | DRAWN    | EF   | 5/04/17 |
|----------------------------------|----------|------|---------|
| □ FLATNESS                       | CHECKED  | PG   | 5/04/17 |
| — STRAIGHTNESS                   | ENG.     | JB   | 5/04/17 |
| ○ ROUNDNESS                      | FINISH   | -    | -       |
| ⊙ CYLINDRICITY                   | WEIGHT   | -    | -       |
| △ PROFILE                        | MATERIAL | -    | -       |
| ⊥ PERPENDICULARITY               | SIZE     | SH 2 | CODE ID |
| ⊕ POSITION                       | B        | OF 2 | 7FUQ0   |
| ◎ CONCENTRICITY                  | SCALE:   | NTS  |         |
| ≡ SYMMETRY                       |          |      |         |
| ∠ ANGULARITY                     |          |      |         |
| ∥ PARALLELISM                    |          |      |         |
| ↺ CIRCULAR RUNOUT                |          |      |         |
| ↻ TOTAL RUNOUT                   |          |      |         |

**KELLY AEROSPACE**  
Thermal Systems  
1625 Lost Nation Rd.  
Willoughby, OH 44094

PA-44 PIPER SEMINOLE AIR CONDITIONING SCHEMATIC, CB-2

|             |      |
|-------------|------|
| DRAWING NO. | REV. |
| AC-01537    | G    |