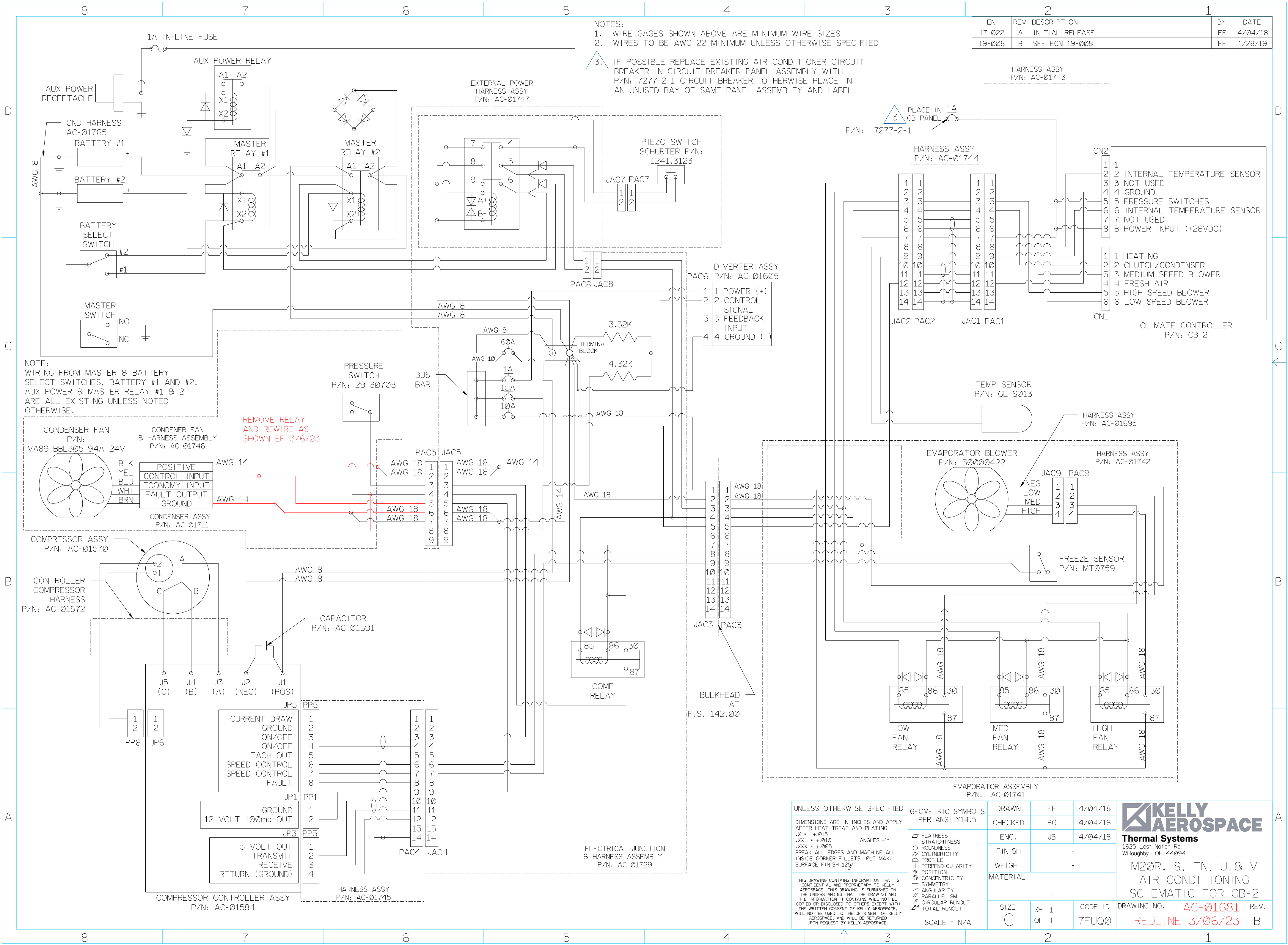


EN	REV	DESCRIPTION	BY	DATE
17-022	A	INITIAL RELEASE	EF	4/04/18
19-008	B	SEE ECN 19-008	EF	1/28/19

- NOTES:
1. WIRE GAGES SHOWN ABOVE ARE MINIMUM WIRE SIZES
 2. WIRES TO BE AWG 22 MINIMUM UNLESS OTHERWISE SPECIFIED
 3. IF POSSIBLE REPLACE EXISTING AIR CONDITIONER CIRCUIT BREAKER IN CIRCUIT BREAKER PANEL ASSEMBLY WITH P/N: T277-2-1 CIRCUIT BREAKER, OTHERWISE PLACE IN AN UNUSED BAY OF SAME PANEL ASSEMBLY AND LABEL



NOTE:
WIRING FROM MASTER & BATTERY SELECT SWITCHES, BATTERY #1 AND #2, AUX POWER & MASTER RELAY #1 & 2 ARE ALL EXISTING UNLESS NOTED OTHERWISE.

REMOVE RELAY AND REWIRE AS SHOWN EF 3/6/23

UNLESS OTHERWISE SPECIFIED		DRAWN		EF		4/04/18	
DIMENSIONS ARE IN INCHES AND APPLY AFTER HEAT TREAT AND PLATING		CHECKED		PG		4/04/18	
.X ± .015		ENG.		JB		4/04/18	
.XX ± .010		FINISH		-			
.XXX ± .005		WEIGHT		-			
BREAK ALL EDGES AND MACHINE ALL INSIDE CORNER FILLETS .015 MAX. SURFACE FINISH 125		MATERIAL		-			
THIS DRAWING CONTAINS INFORMATION THAT IS CONFIDENTIAL AND PROPRIETARY TO KELLY AEROSPACE. THIS DRAWING IS FURNISHED ON THE UNDERSTANDING THAT THE DRAWING AND THE INFORMATION IT CONTAINS WILL NOT BE COPIED OR DISCLOSED TO OTHERS EXCEPT WITH THE WRITTEN CONSENT OF KELLY AEROSPACE. WILL NOT BE USED TO THE DETRIMENT OF KELLY AEROSPACE, AND WILL BE RETURNED UPON REQUEST BY KELLY AEROSPACE.		SCALE		N/A			



M20R, S, TN, U & V
AIR CONDITIONING
SCHEMATIC FOR CB-2

DRAWING NO. **AC-01681** REV. **B**
REDLINE 3/06/23