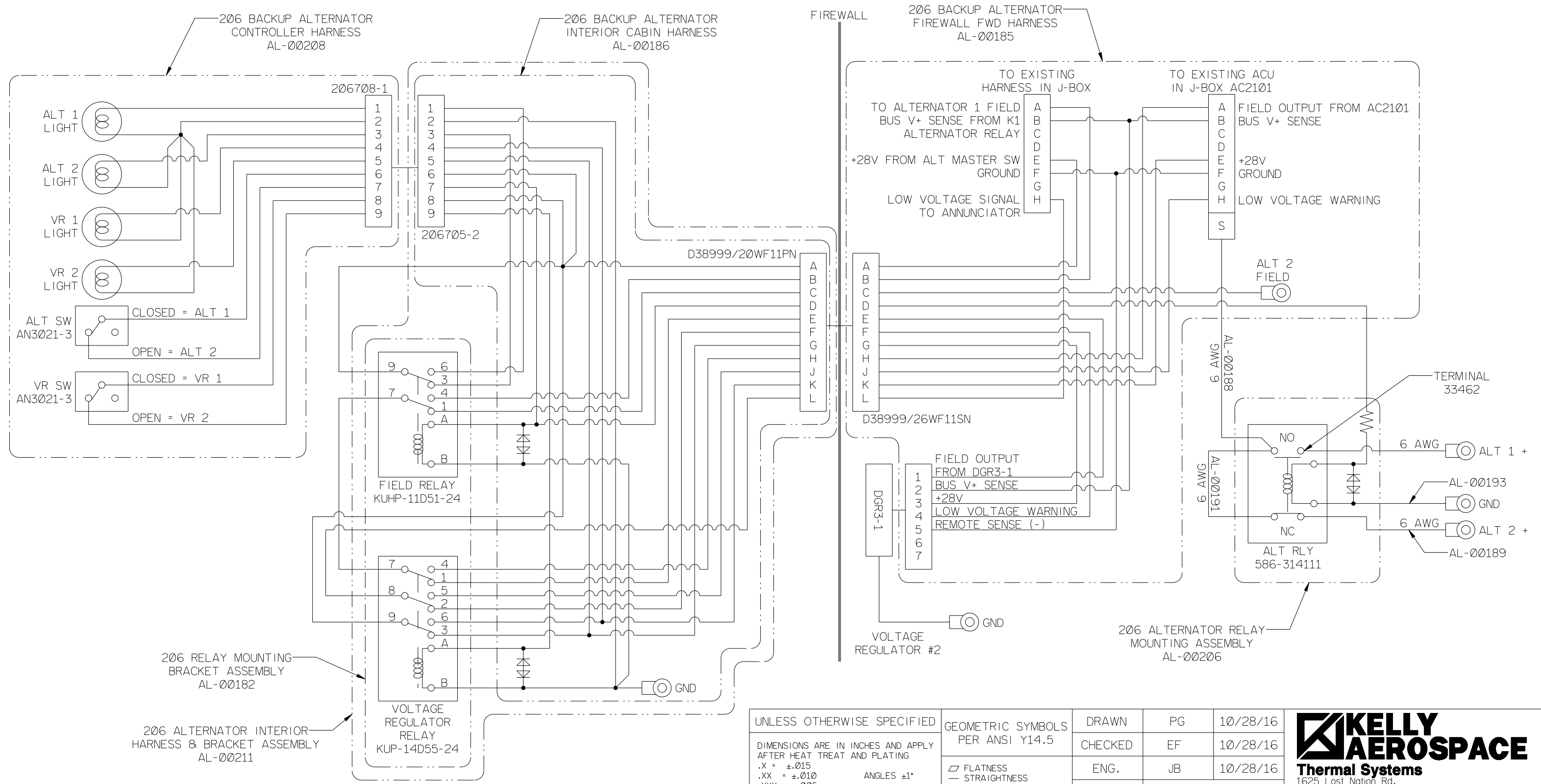


EN	REV	DESCRIPTION	BY	DATE
16-008	A	INITIAL RELEASE	PG	10/28/16



206 RELAY MOUNTING BRACKET ASSEMBLY AL-00182

206 ALTERNATOR INTERIOR HARNESS & BRACKET ASSEMBLY AL-00211

- NOTES:
1. WIRE GAGES SHOWN ARE MINIMUM WIRE SIZES.
  2. WIRES TO BE 20 AWG MINIMUM UNLESS OTHERWISE SPECIFIED.
  3. RELAYS SHOWN IN NORMALLY CLOSED POSITION

UNLESS OTHERWISE SPECIFIED		GEOMETRIC SYMBOLS PER ANSI Y14.5		DRAWN	PG	10/28/16
DIMENSIONS ARE IN INCHES AND APPLY AFTER HEAT TREAT AND PLATING		<ul style="list-style-type: none"> <li>▭ FLATNESS</li> <li>— STRAIGHTNESS</li> <li>○ ROUNDNESS</li> <li>⊘ CYLINDRICITY</li> <li>△ PROFILE</li> <li>⊥ PERPENDICULARITY</li> <li>⊕ POSITION</li> <li>◎ CONCENTRICITY</li> <li>≡ SYMMETRY</li> <li>∠ ANGULARITY</li> <li>∥ PARALLELISM</li> <li>↺ CIRCULAR RUNOUT</li> <li>↻ TOTAL RUNOUT</li> </ul>		CHECKED	EF	10/28/16
.X = ±.015				ENG.	JB	10/28/16
.XX = ±.010		ANGLES ±1°		FINISH	-	
.XXX = ±.005				WEIGHT	-	
BREAK ALL EDGES AND MACHINE ALL INSIDE CORNER FILLETS .015 MAX. SURFACE FINISH 125				MATERIAL	-	
THIS DRAWING CONTAINS INFORMATION THAT IS CONFIDENTIAL AND PROPRIETARY TO KELLY AEROSPACE. THIS DRAWING IS FURNISHED ON THE UNDERSTANDING THAT THE DRAWING AND THE INFORMATION IT CONTAINS WILL NOT BE COPIED OR DISCLOSED TO OTHERS EXCEPT WITH THE WRITTEN CONSENT OF KELLY AEROSPACE. WILL NOT BE USED TO THE DETRIMENT OF KELLY AEROSPACE, AND WILL BE RETURNED UPON REQUEST BY KELLY AEROSPACE.		SCALE: N/A		SIZE	SH 1 OF 1	CODE ID
				B		DRAWING NO.
						AL-00195
						REV.
						A



206H & T206H  
BACKUP ALTERNATOR  
WIRING DIAGRAM