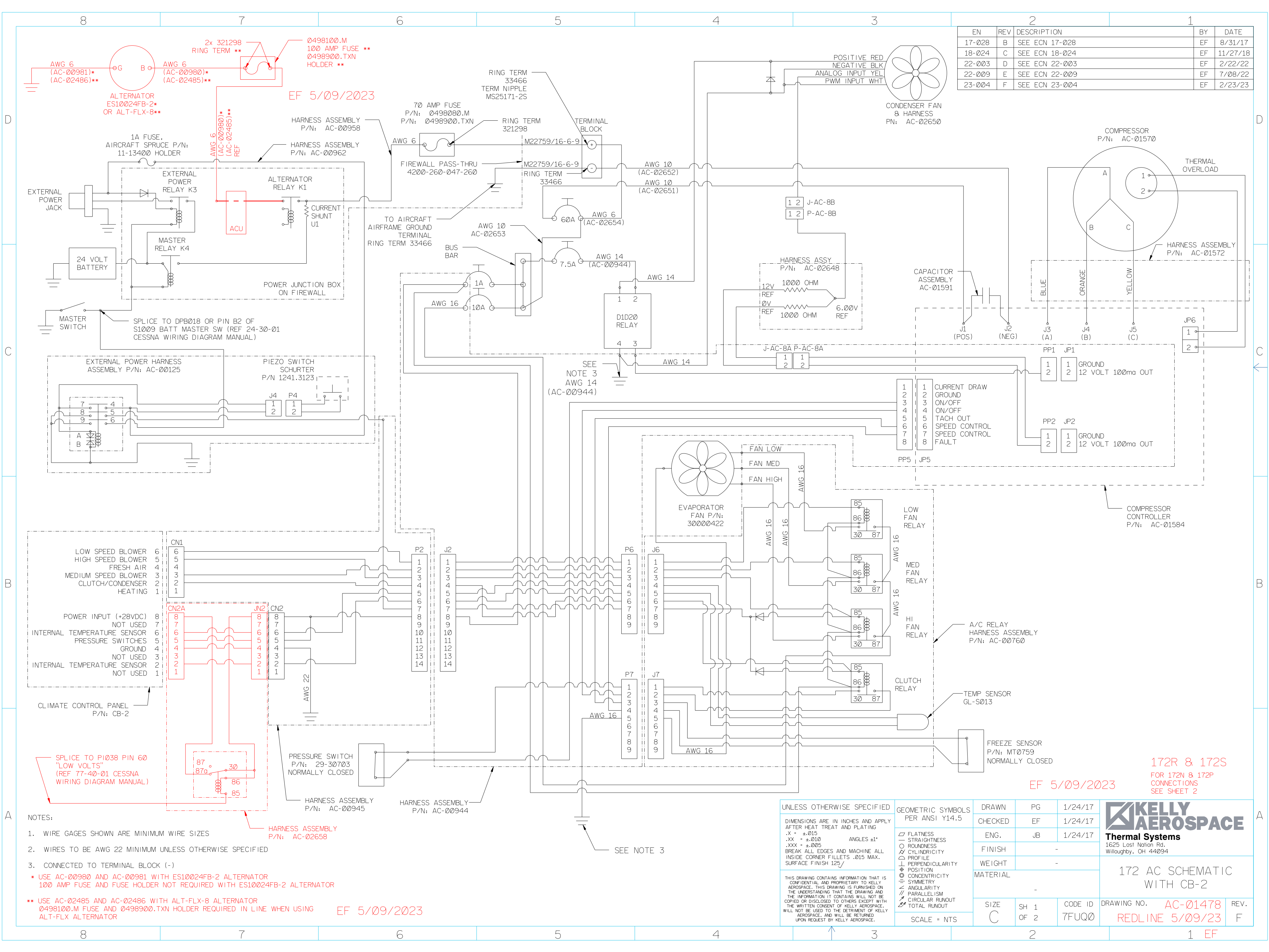


EN	REV	DESCRIPTION	BY	DATE
17-028	B	SEE ECN 17-028	EF	8/31/17
18-024	C	SEE ECN 18-024	EF	11/27/18
22-003	D	SEE ECN 22-003	EF	2/22/22
22-009	E	SEE ECN 22-009	EF	7/08/22
23-004	F	SEE ECN 23-004	EF	2/23/23



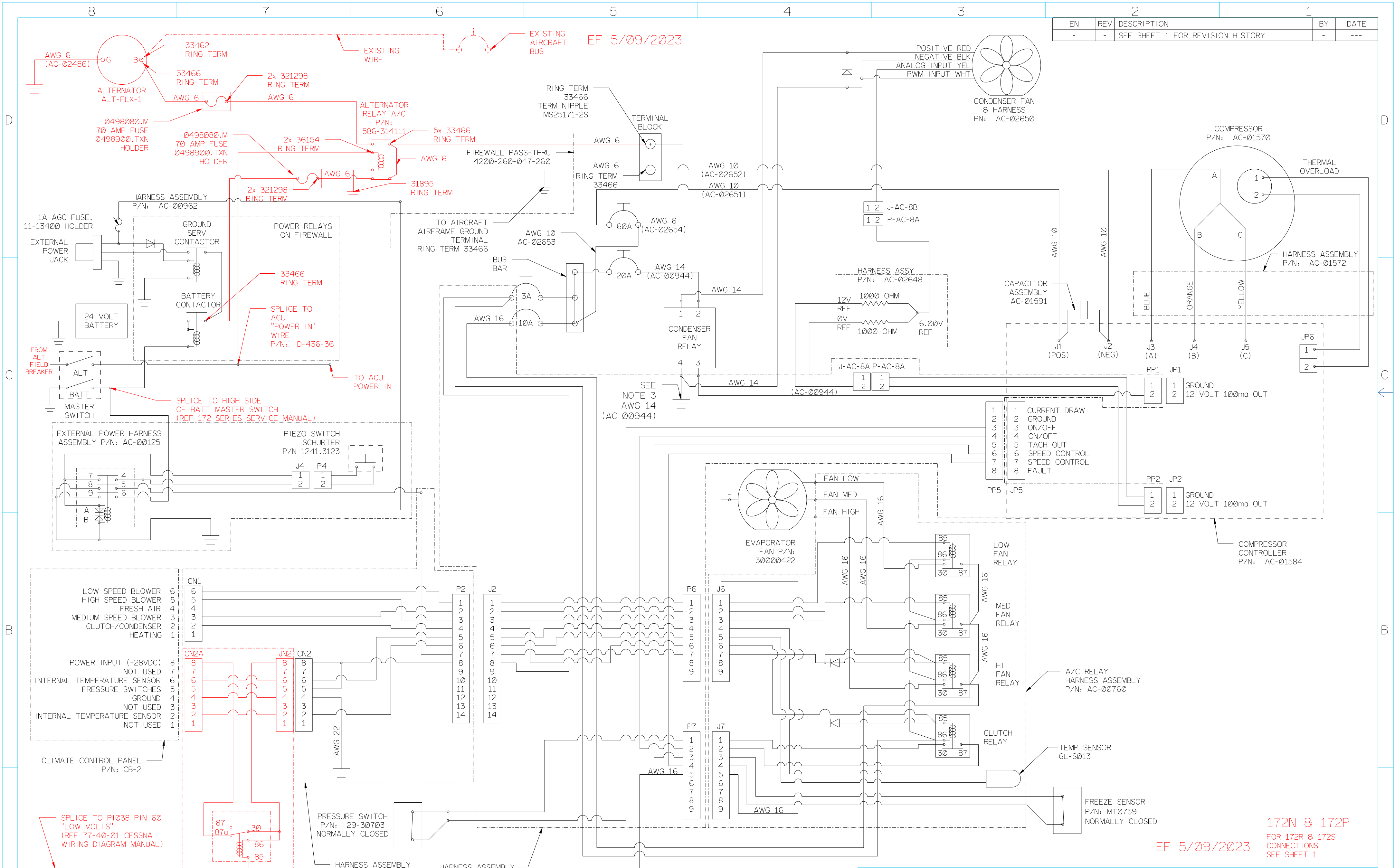
- NOTES:
1. WIRE GAGES SHOWN ARE MINIMUM WIRE SIZES
 2. WIRES TO BE AWG 22 MINIMUM UNLESS OTHERWISE SPECIFIED
 3. CONNECTED TO TERMINAL BLOCK (-)
 - * USE AC-00980 AND AC-00981 WITH ES10024FB-2 ALTERNATOR
100 AMP FUSE AND FUSE HOLDER NOT REQUIRED WITH ES10024FB-2 ALTERNATOR
 - ** USE AC-02485 AND AC-02486 WITH ALT-FLX-8 ALTERNATOR
0498100.M FUSE AND 0498900.TXN HOLDER REQUIRED IN LINE WHEN USING ALT-FLX ALTERNATOR

UNLESS OTHERWISE SPECIFIED DIMENSIONS ARE IN INCHES AND APPLY AFTER HEAT TREAT AND PLATING .X = ±.015 .XX = ±.010 .XXX = ±.005 BREAK ALL EDGES AND MACHINE ALL INSIDE CORNER FILLETS .015 MAX. SURFACE FINISH 125/	GEOMETRIC SYMBOLS PER ANSI Y14.5	DRAWN	PG	1/24/17	<p>1625 Lost Nation Rd. Willoughby, OH 44094</p> <p>172 AC SCHEMATIC WITH CB-2</p>
	<ul style="list-style-type: none"> — FLATNESS — STRAIGHTNESS ○ ROUNDNESS ○ CYLINDRICITY ∅ PROFILE ⊥ PERPENDICULARITY ⊕ POSITION ⊙ CONCENTRICITY ≡ SYMMETRY ∠ ANGULARITY ∥ PARALLELISM ⊙ CIRCULAR RUNOUT ⊙ TOTAL RUNOUT 	CHECKED	EF	1/24/17	
	SCALE = NTS	ENG.	JB	1/24/17	
		FINISH	-		
	WEIGHT	-			
	MATERIAL	-			
	SIZE	SH 1	CODE ID	DRAWING NO.	AC-01478
		OF 2	7FUQ0	REV.	REDLINE 5/09/23
					EF

172R & 172S
FOR 172N & 172P
CONNECTIONS
SEE SHEET 2

EF 5/09/2023

EN	REV	DESCRIPTION	BY	DATE
-	-	SEE SHEET 1 FOR REVISION HISTORY	-	---



- NOTES:
1. WIRE GAGES SHOWN ARE MINIMUM WIRE SIZES
 2. WIRES TO BE AWG 22 MINIMUM UNLESS OTHERWISE SPECIFIED
 3. CONNECTED TO TERMINAL BLOCK (-)

UNLESS OTHERWISE SPECIFIED DIMENSIONS ARE IN INCHES AND APPLY AFTER HEAT TREAT AND PLATING .X = ±.015 .XX = ±.010 .XXX = ±.005 BREAK ALL EDGES AND MACHINE ALL INSIDE CORNER FILLETS .015 MAX. SURFACE FINISH 125/	GEOMETRIC SYMBOLS PER ANSI Y14.5	DRAWN	PG	1/24/17	<p>1625 Last Nation Rd. Willoughby, OH 44094</p>			
	<ul style="list-style-type: none"> — FLATNESS — STRAIGHTNESS ○ ROUNDNESS ○ CYLINDRICITY △ PROFILE ⊥ PERPENDICULARITY ⊕ POSITION ◎ CONCENTRICITY = SYMMETRY ∠ ANGULARITY ∥ PARALLELISM ○ CIRCULAR RUNOUT ○ TOTAL RUNOUT 	CHECKED	EF	1/24/17				
	SCALE = NTS	ENG.	JB	1/24/17				
		FINISH	-					
<p>THIS DRAWING CONTAINS INFORMATION THAT IS CONFIDENTIAL AND PROPRIETARY TO KELLY AEROSPACE. THIS DRAWING IS FURNISHED ON THE UNDERSTANDING THAT THE DRAWING AND THE INFORMATION IT CONTAINS WILL NOT BE COPIED OR DISCLOSED TO OTHERS EXCEPT WITH THE WRITTEN CONSENT OF KELLY AEROSPACE. IT WILL NOT BE USED TO THE DETRIMENT OF KELLY AEROSPACE, AND WILL BE RETURNED UPON REQUEST BY KELLY AEROSPACE.</p>	WEIGHT	-			<p>172N 8 172P FOR 172R & 172S CONNECTIONS SEE SHEET 1</p>			
	MATERIAL	-						
	SIZE	SH 2	CODE ID	7FUQ0	DRAWING NO.	AC-01478	REV.	F
		OF 2			REDLINE	5/09/23		EF